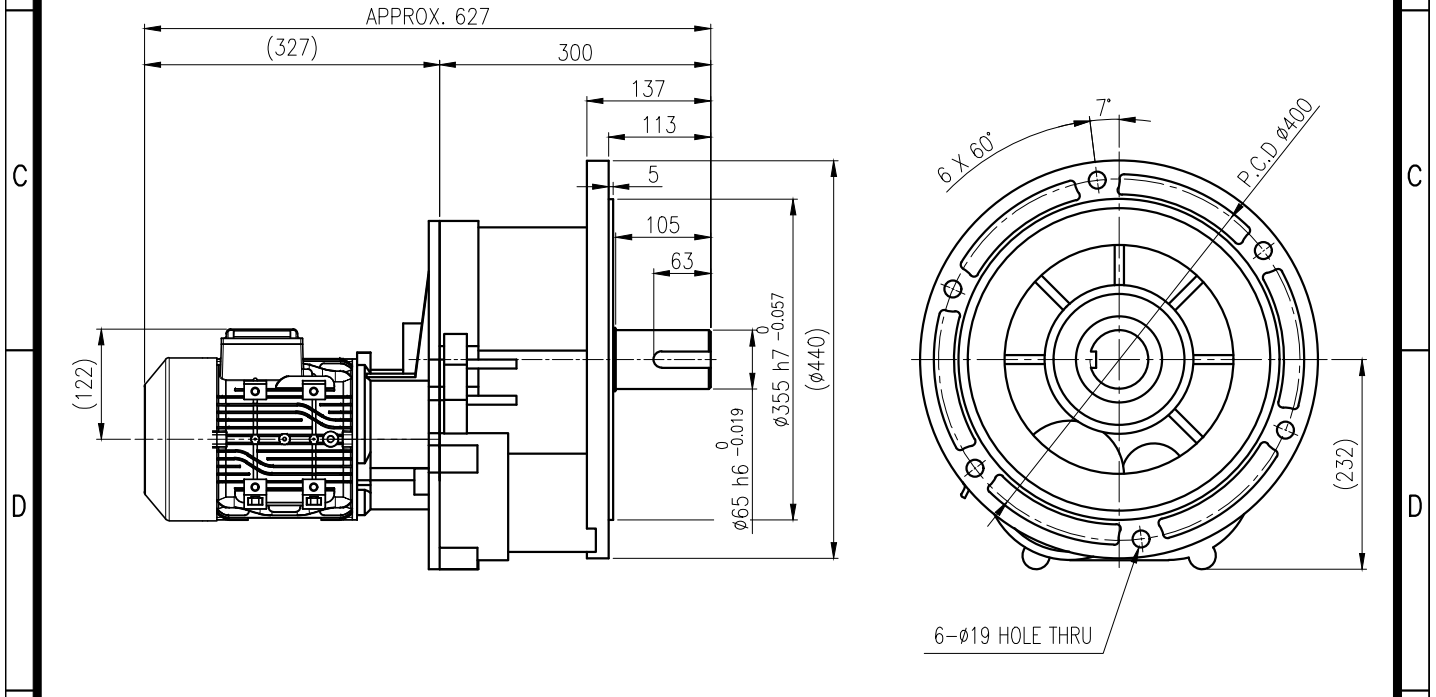
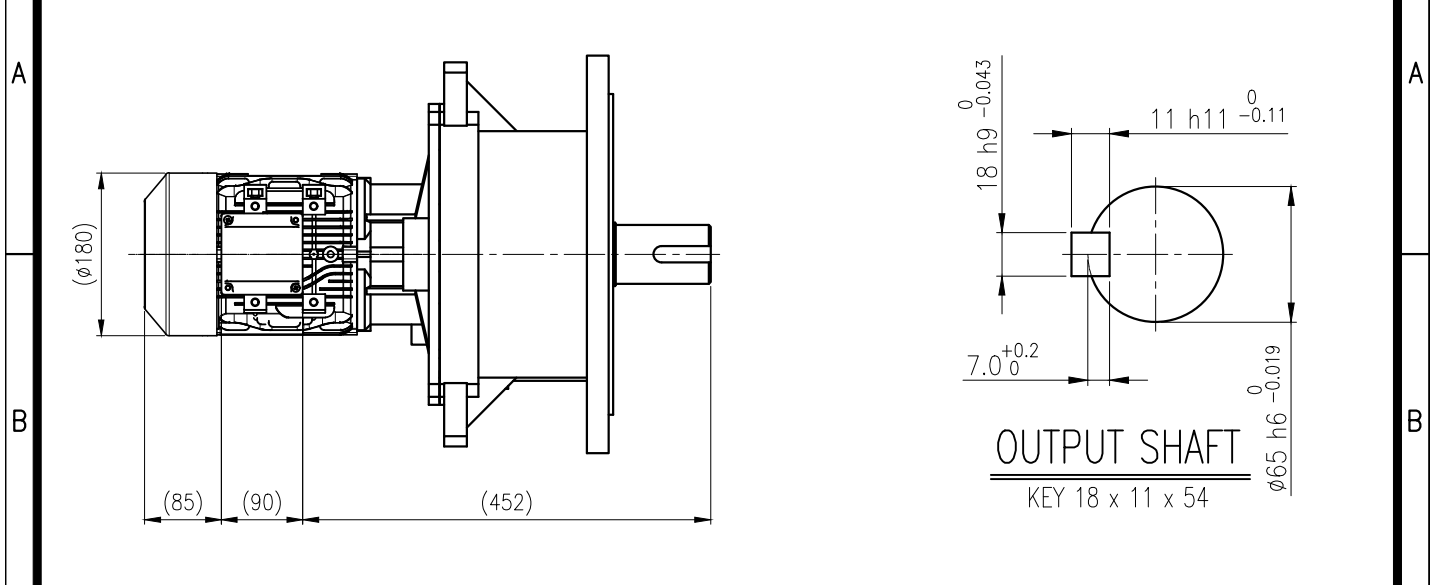


1	2	3	4	5
No.	NAME	MATERIAL	DWG/MATL No.	CODE Q'TY
				0



		BEARING			
		INPUT PINION	6204ZZ	6205ZZ	
OIL SEAL		2ND PINION	6204ZZ	6205ZZ	GREASE : NLGI(EP)00
MOTOR SHAFT	D(M) 25 x 38 x 8	3RD PINION	6207ZZ	6309ZZ	ABOUT 7.0 kg
OUTPUT SHAFT	D(M) 70 x 95 x 13	OUTPUT SHAFT	PM5060	22214	WEIGHT 114 kg

		외형도 OUTLINE DIMENSION			
		DWG No. EK2DO100028H0001		UNIT	mm
				SCALE	1:1
No.	DATE	DESIGNER		DESIGNED	CHECKED
		DESCRIPTION of REVISION		REVIEWED	APPROVED
				DATE	2022-02-14
FORM		HYOSUNG HEAVY INDUSTRIES		DESIGNED	22.02.14
CE-14-0100-444				CHECKED	22.02.14
2013.11.20				REVIEWED	22.02.14
				APPROVED	22.02.14
				DATE	2022-02-14
				REVISION No.	01
				THIRD ANGLE PROJECTION	
TYPE		F1VA_23_1.5kW_100~120:1_프리미엄		REF. No.	-
A4(210X297mm)				A	

The information written in this drawing is HYOSUNG HEAVY INDUSTRIES's property, and may not be disclosed and/or reproduced without the prior official permission of HYOSUNG HEAVY INDUSTRIES Corp.

이 도면상에 표시된 정보는 호성중공업(주)의 소유이며 당사의 사전 서면동의 없이 무단사용을 금합니다.