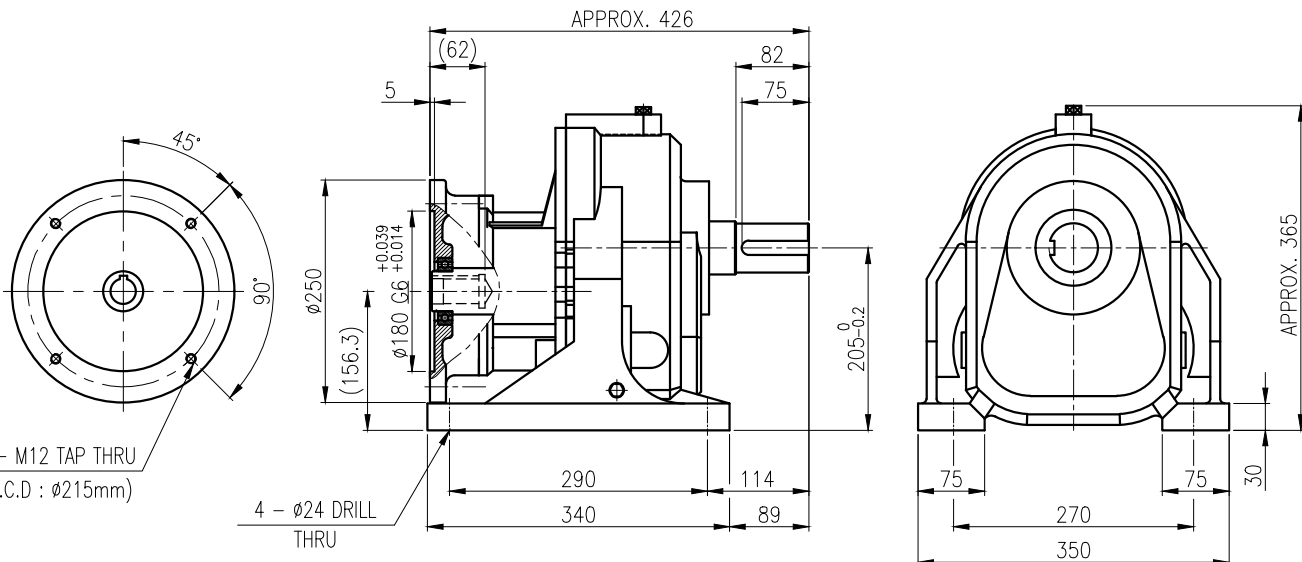
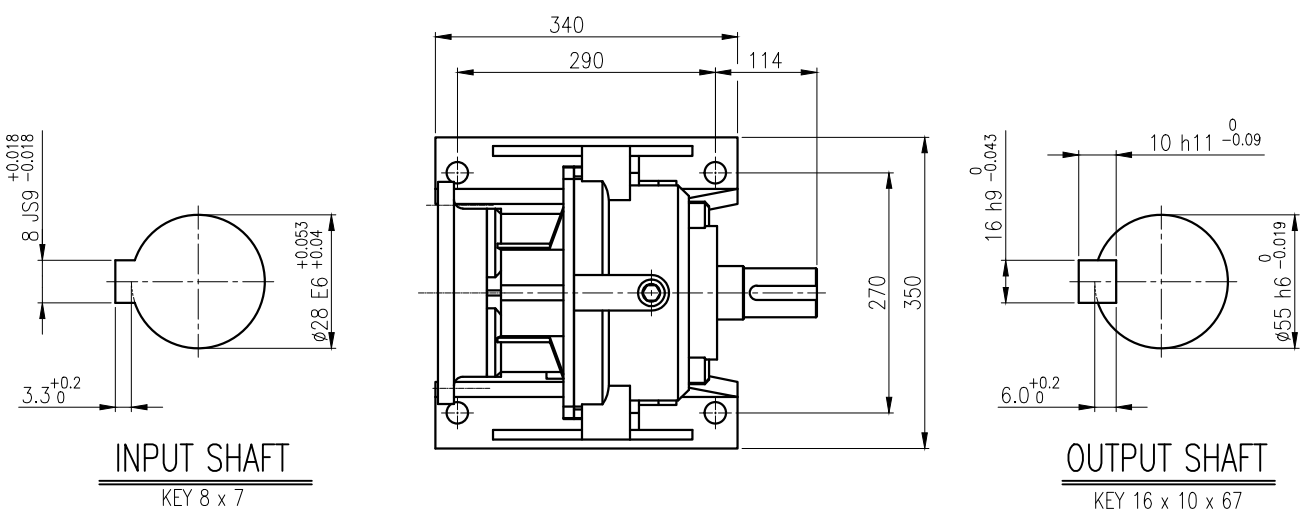


1	2	3	4	5				
No.	NAME	MATERIAL	DWG/MATL No.	CODE	Q'TY	SIZE	WEIGHT	REMARK
					0			



			BEARING		
			INPUT SHAFT	6009ZZ 6207ZZ	
	OIL SEAL		2ND PINION	6205ZZ 6204ZZ	GREASE : NLGI(EP)00
	INPUT SHAFT	D(M) 35 x 47 x 7	3RD PINION	6208ZZ 6308ZZ	ABOUT 1.4 kg
	OUTPUT SHAFT	D(M) 60 x 85 x 12	OUTPUT SHAFT	PM4530 22212	WEIGHT 78 kg

			외형도 OUTLINE DIMENSION			
			DWG NAME		EK2D007810	
			UNIT		mm	
			SCALE		1:1	
1 22-06-02 IEC Flange 공용으로 전장 길이 수정 (397.5-→426)			DESIGNED		2019-06-03	
No. DATE DESCRIPTION of REVISION			CHECKED		REVISION No. 01	
No. DATE DESCRIPTION of REVISION			REVIEWED		THIRD ANGLE PROJECTION	
No. DATE DESCRIPTION of REVISION			APPROVED		REF. No. -	
			DATE		A	
TYPE F1HF_20_2.2kW_60~120:1_IEC FLANGE TYPE						