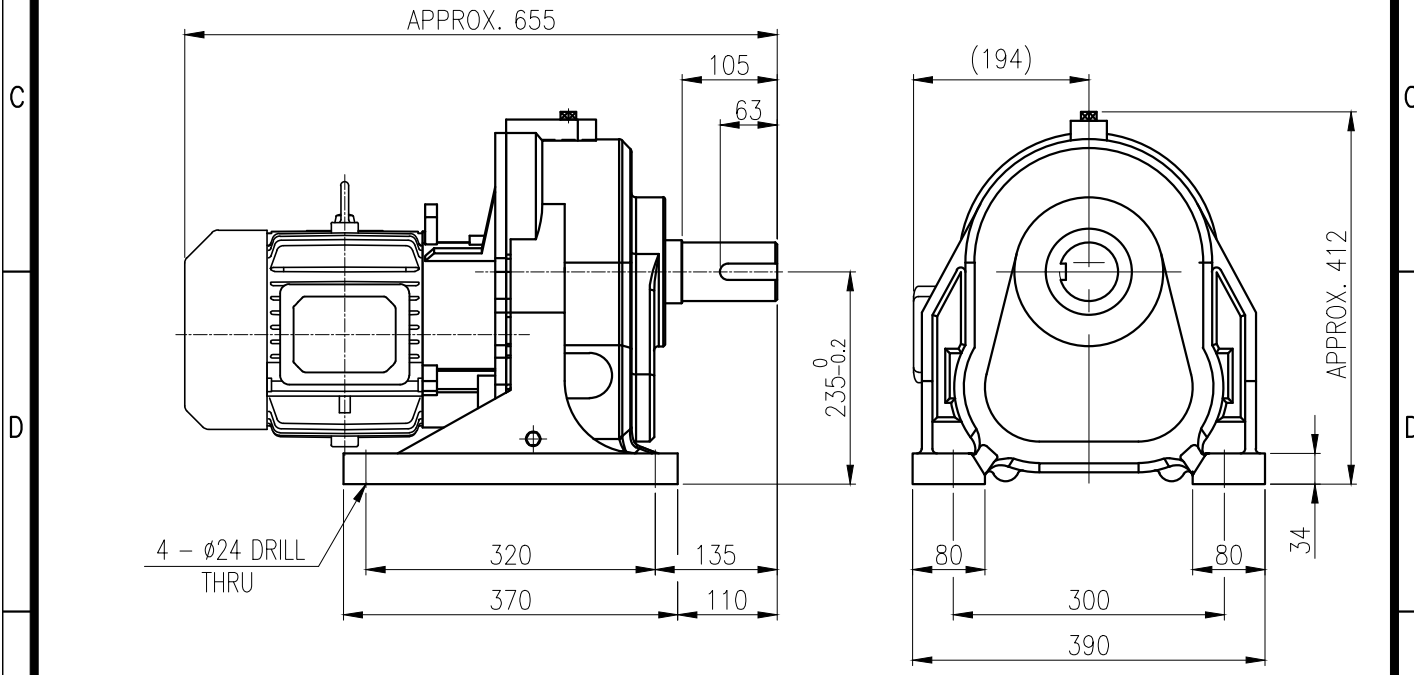
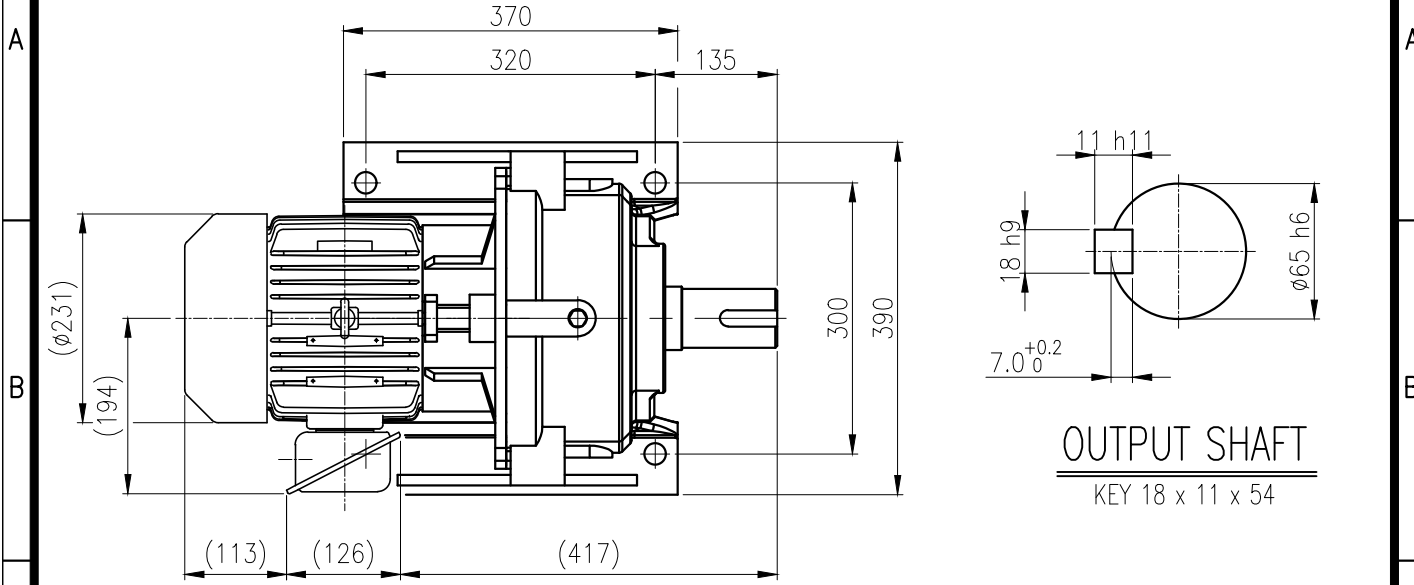


1	2	3	4	5				
No.	NAME	MATERIAL	DWG/MATL No.	CODE	Q'TY	SIZE	WEIGHT	REMARK
					0			



		BEARING		
		INPUT SHAFT	6206ZZ 6207ZZ	
	OIL SEAL	2ND PINION	6207ZZ 6205ZZ	GREASE : NLGI(EP)00
	MOTOR SHAFT	D(M) 35 x 47 x 7	3RD PINION	6207ZZ 6309ZZ
	OUTPUT SHAFT	D(M) 70 x 95 x 13	OUTPUT SHAFT	PM5060 22214
				ABOUT 2.3 kg
				WEIGHT 137 kg

		DWG NAME		외형도 OUTLINE DIMENSION	
		DWG No.		E K2D007672H0001	
		UNIT		mm	
		SCALE		1:1	
No.	DATE	DESIGNED	CHECKED	REVIEWED	APPROVED
		2019.01.21	2019.01.21	2019.01.21	2019.01.21
		하슬기	문병선	박희성	최성민
DESCRIPTION of REVISION		DATE	2019-01-21		
		REVISION No.	01		
		THIRD ANGLE PROJECTION			
TYPE		F1HM_23_3.7kW_60:1_프리미엄		REF. No.	-
A4(210X297mm) FORM CE-14-0100-444 2013.11.20		HYOSUNG HEAVY INDUSTRIES		A	

이 도면상에 표시된 정보는 호성중공업(주)의 소유이며 당사의 사전 서면동의 없이 무단사용을 금합니다.