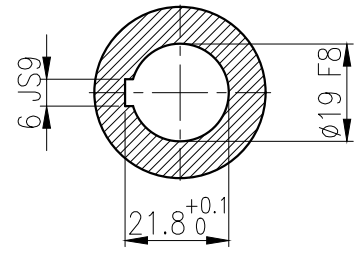
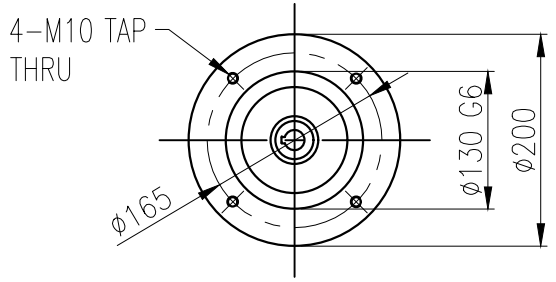


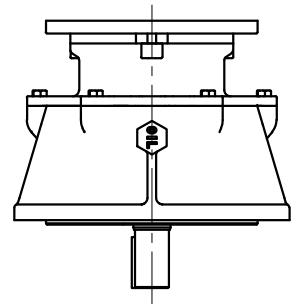
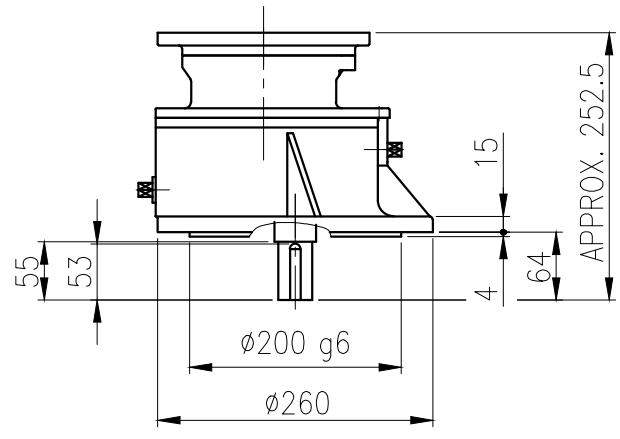
1	2	3	4	5				
No.	NAME	MATERIAL	DWG/MATL No.	CODE	Q'TY	SIZE	WEIGHT	REMARK
					0			

A

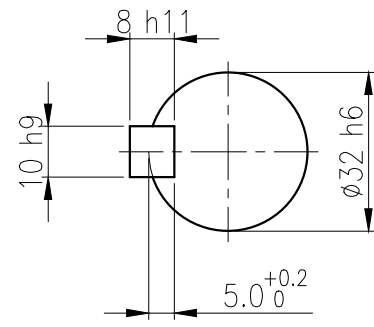
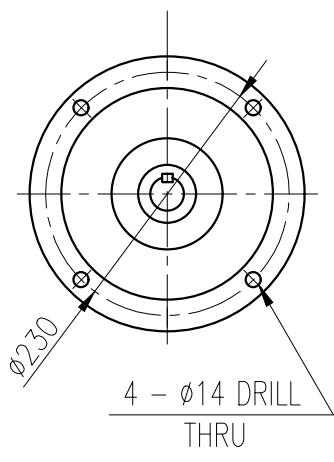


INPUT SHAFT

B



C



OUTPUT SHAFT

KEY 10 x 8 x 48

E

		BEARING			
OIL SEAL		INPUT SHAFT	#6006ZZ #6205ZZ		
MOTOR SHAFT D(M) 18x30x8		2ND PINION	#6302ZZ #6304ZZ	GREASE : NLGI(EP)00	
OUTPUT SHAFT D(M) 35x55x11		3RD PINION	-	ABOUT 0.3 kg	
		OUTPUT SHAFT	#6307ZZ #PM2025	WEIGHT 24 kg	

F

		DWG NAME				외형도 OUTLINE DIMENSION	
		DWG No.		EK2D007331		UNIT	mm
						SCALE	1:1
No.	DATE	DESCRIPTION of REVISION		DESIGNED	CHECKED	REVIEWED	APPROVED
A4(210X297mm)	FORM CE-14-0100-444 2013.11.20	HYOSUNG HEAVY INDUSTRIES		2019.01.14 최성민	2019.01.14 문병선	2019.01.14 박희성	2019.01.14 홍원철
TYPE		FVI_80Fr(0.75kW)_30:1N Type		DATE	2019-01-14		
				REVISION No.	01		
				THIRD ANGLE PROJECTION			
				REF. No.	(EK2D006062)		(A)

이 도면상에 표시된 정보는 호성중공업(주)의 소유이며 당사의 사전 서면동의 없이 무단사용을 금합니다.