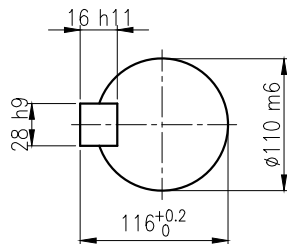
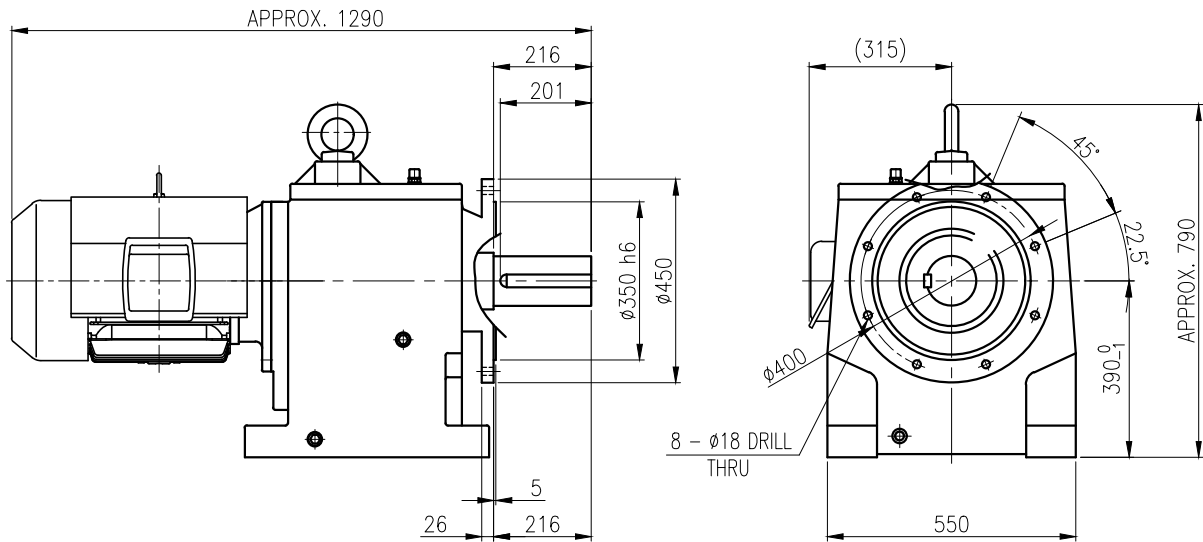


1	2	3	4	5				
No.	NAME	MATERIAL	DWG/MATL No.	CODE	Q'TY	SIZE	WEIGHT	REMARK
					0			



**OUTPUT SHAFT**  
(28 x 16 x 187)

			BEARING		
			INPUT SHAFT	6310ZZ 6312ZZ	
			2ND PINION	6310 NJ310E	OIL : ISO VG 220
			3RD PINION	NJ312E NJ312E	ABOUT 55 l
			OUTPUT SHAFT	22216 22222	WEIGHT 752 kg
OIL SEAL					
MOTOR SHAFT	D(M) 60 x 82 x 12				
OUTPUT SHAFT	D(M) 125 x 200 x 14				

		DWG NAME		외형도 OUTLINE DIMENSION	
		DWG No.		E <del>K</del> 2D007281W0001	
		UNIT		mm	
		SCALE		1:1	
No.	DATE	DESIGNER		DESIGNED	2018-08-15
		DESCRIPTION of REVISION		CHECKED	
				REVIEWED	
				APPROVED	
				DATE	2018-08-15
				REVISION No.	01
				THIRD ANGLE PROJECTION	
				REF. No.	(GKDS477G03)
				A	

**HYOSUNG HEAVY INDUSTRIES**  
 TYPE HFM39\_180M(18.5kW/22kW)\_60~80:1\_Ntype  
 FORM CE-14-0100-444 2013.11.20  
 A4(210x297mm)

이 도면상에 표시된 정보는 호성중공업(주)의 소유이며 당사의 사전 서면동의 없이 무단사용을 금합니다.