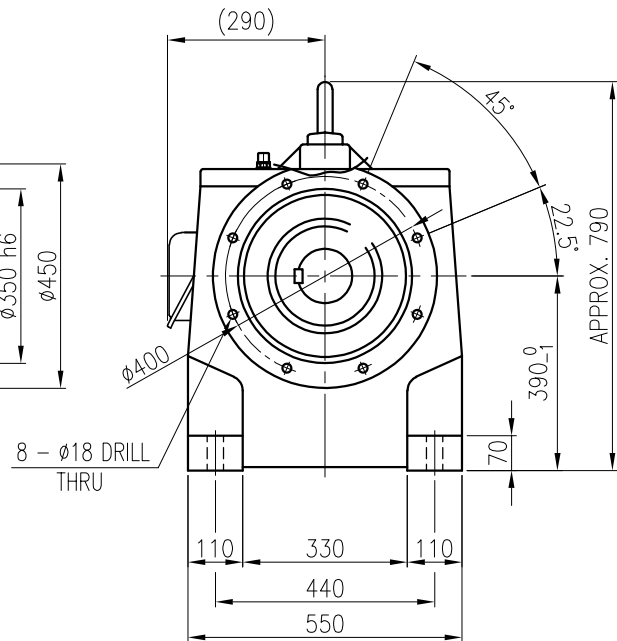
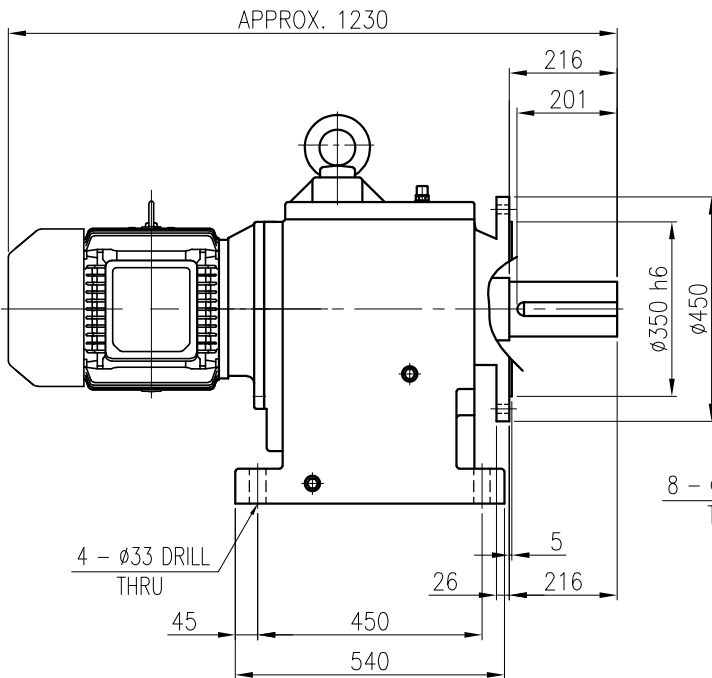


OUTPUT SHAFT
(28 x 16 x 187)



		BEARING				
		INPUT SHAFT	6309ZZ	6310ZZ		
OIL SEAL		2ND PINION	6310	NJ310E	OIL : ISO VG 220	
MOTOR SHAFT	D(M) 50 x 72 x 12	3RD PINION	NJ312E	NJ312E	ABOUT 55 l	
OUTPUT SHAFT	D(M) 125 x 200 x 14	OUTPUT SHAFT	22216	22222	WEIGHT 670 kg	

		외형도 OUTLINE DIMENSION					
		DWG No. EK2D007280H0001				UNIT	mm
						SCALE	1:1
No.	DATE	DESCRIPTION of REVISION				DESIGNED	CHECKED
						REVIEWED	APPROVED
						DATE	2018-08-15
						DESIGNED	최성민
						CHECKED	문병선
						REVIEWED	박희성
						APPROVED	홍원철
						DATE	2018-08-15
						REVISION No.	01
						THIRD ANGLE PROJECTION	
						REF. No.	(GKDS477G02)
						(A)	

HYOSUNG HEAVY INDUSTRIES

TYPE HFM39_160L(15kW)_80~100:1_Ntype