

A A

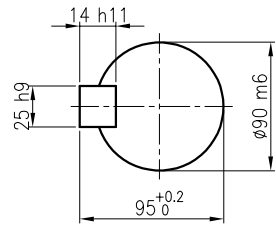
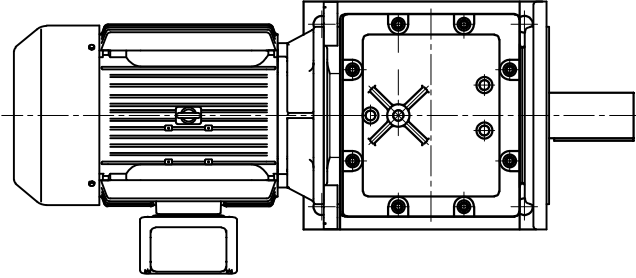
B B

C C

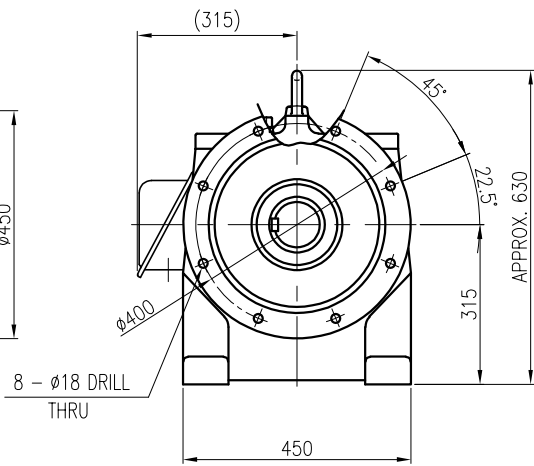
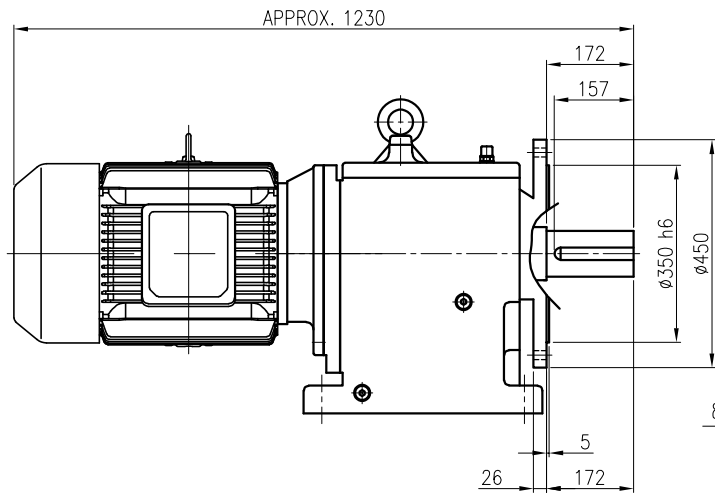
D D

E E

F F



OUTPUT SHAFT
(25 x 14 x 144)



		BEARING				
		INPUT SHAFT	6310ZZ	6312ZZ		
OIL SEAL		2ND PINION	6308	NJ308E	OIL : ISO VG 220	
MOTOR SHAFT	D(M) 60 x 82 x 12	3RD PINION	NJ310E	NJ310E	ABOUT 22 l	
OUTPUT SHAFT	D(M) 105 x 160 x 14	OUTPUT SHAFT	22212	22218	WEIGHT 567 kg	

		외형도 OUTLINE DIMENSION					
		DWG No. EK2D007269H0001				UNIT	mm
						SCALE	1:1
No.	DATE	DESCRIPTION of REVISION				DESIGNED	CHECKED
						REVIEWED	APPROVED
						DATE	2018-08-15
						DESIGNED	최성민
						CHECKED	문병선
						REVIEWED	박희성
						APPROVED	홍원철
						DATE	2018-08-15
						REVISION No.	01
						THIRD ANGLE PROJECTION	
A4(210x297mm) FORM CE-14-0100-4A4 2013.11.20		TYPE HFM32_180L(30kW)_30:1_Ntype				REF. No.	(GKDS476G05)
						(A)	

이 도면상에 표시된 정보는 표상용이며(주)의 소유이며 당사의 사전 서면동의 없이 무단사용을 금합니다.