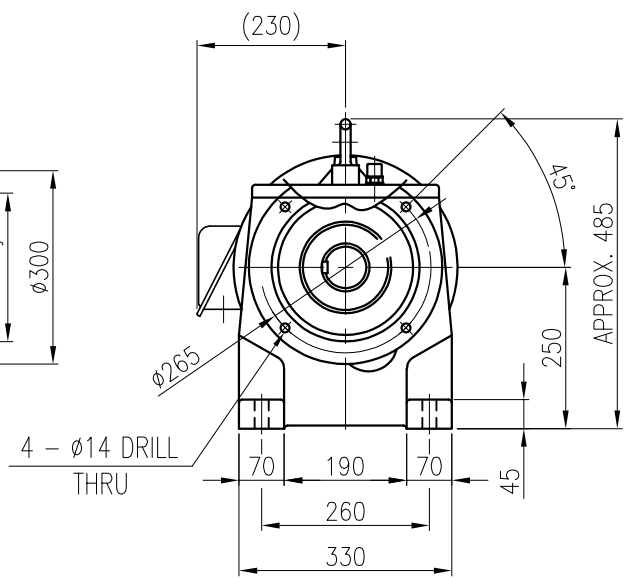
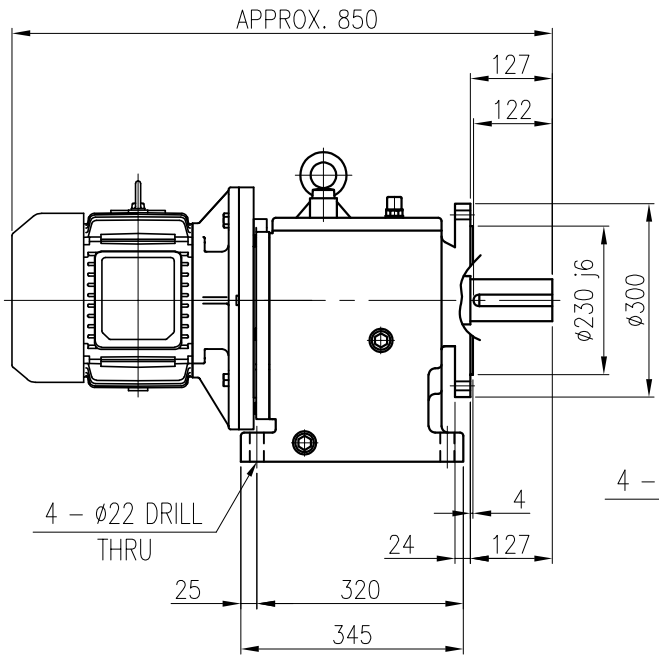


OUTPUT SHAFT
(18x11x113)



		BEARING			
		INPUT SHAFT	6207ZZ	6308ZZ	
OIL SEAL		2ND PINION	6404	NJ306E	OIL : ISO VG 220
MOTOR SHAFT	D(M) 40 x 62 x 11	3RD PINION	NJ308E	NJ308E	ABOUT 10 l
OUTPUT SHAFT	D(M) 75 x 120 x 12	OUTPUT SHAFT	22209	22213	WEIGHT 205 kg

		DWG NAME				외형도 OUTLINE DIMENSION	
		DWG No. EK2D007244H0001				UNIT	mm
						SCALE	1:1
No.	DATE	DESCRIPTION of REVISION				DESIGNED	CHECKED
FORM		2013.11.20		2018.10.01		2018.10.01	
AA4(210x297mm)		CE-14-0100-4A4		최성민		문병선	
TYPE		HFM25_132S(5.5kW)_40~60:1_Ntype		박희성		홍원철	
		REF. No.		(GKDS474G02)		DATE 2018-08-15	
						REVISION No. 01	
						THIRD ANGLE PROJECTION	

이 도면상에 표시된 정보는 호성중공업(주)의 소유이며 당사의 사전 서면동의 없이 무단사용을 금합니다.