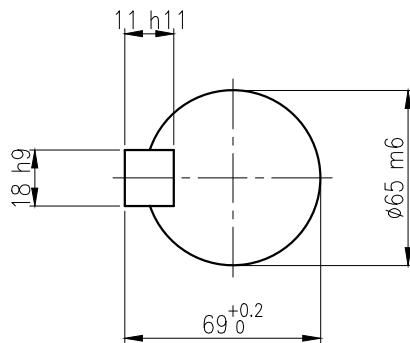
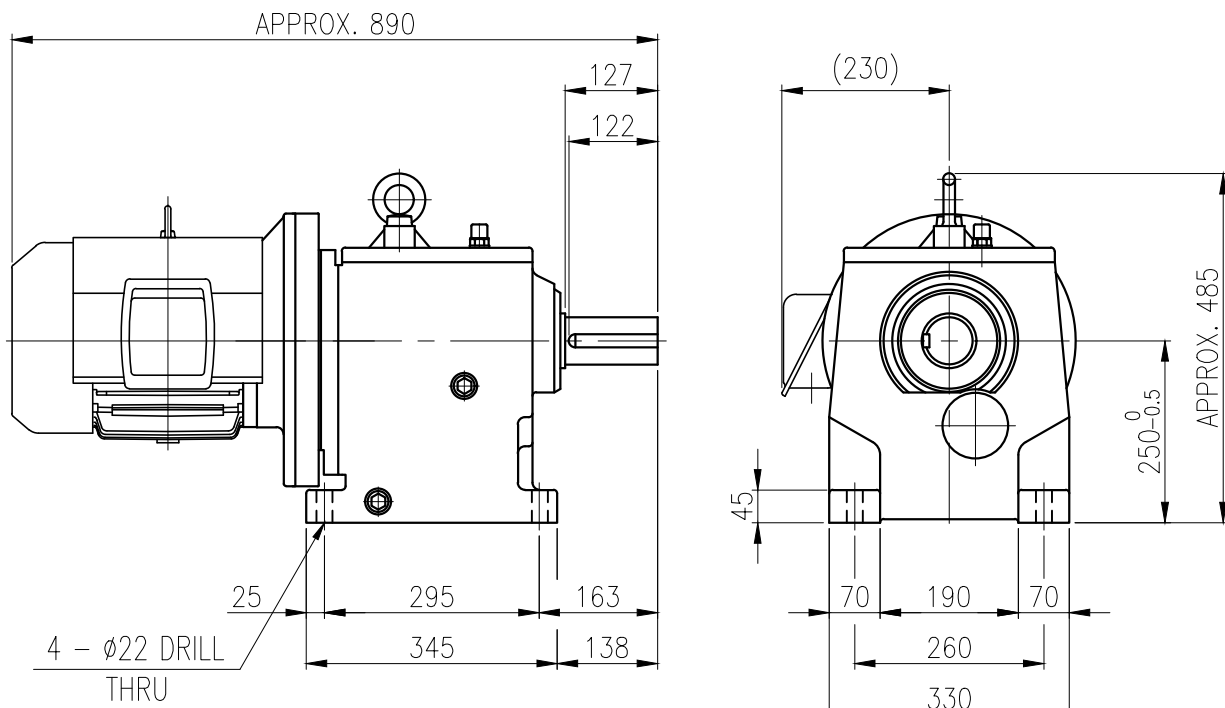


1	2	3	4	5				
No.	NAME	MATERIAL	DWG/MATL No.	CODE	Q'TY	SIZE	WEIGHT	REMARK
					0			



OUTPUT SHAFT
(18x11x113)

		BEARING				
		INPUT SHAFT	6207ZZ	6308ZZ		
OIL SEAL		2ND PINION	6404	NJ306E	OIL : ISO VG 220	
MOTOR SHAFT	D(M) 40 x 62 x 11	3RD PINION	NJ308E	NJ308E	ABOUT 10 l	
OUTPUT SHAFT	D(M) 75 x 120 x 12	OUTPUT SHAFT	22209	22213	WEIGHT	215 kg

		외형도 OUTLINE DIMENSION					
		DWG No. EK2DO07242W0001				UNIT	mm
						SCALE	1:1
No.	DATE	DESCRIPTION of REVISION				DESIGNED	2018-08-15
		2018.10.01	2018.10.01	2018.10.01	2018.10.01	DATE	2018-08-15
		최성민	문병선	박희성	홍원철	REVISION No.	01
		THIRD ANGLE PROJECTION					
A4(210x297mm) FORM CE-14-0100-444 2013.11.20		HYOSUNG HEAVY INDUSTRIES				REF. No.	(GKDS470G03)
		TYPE HHM25_132M(7.5kW)_40~50:1_Ntype				A	