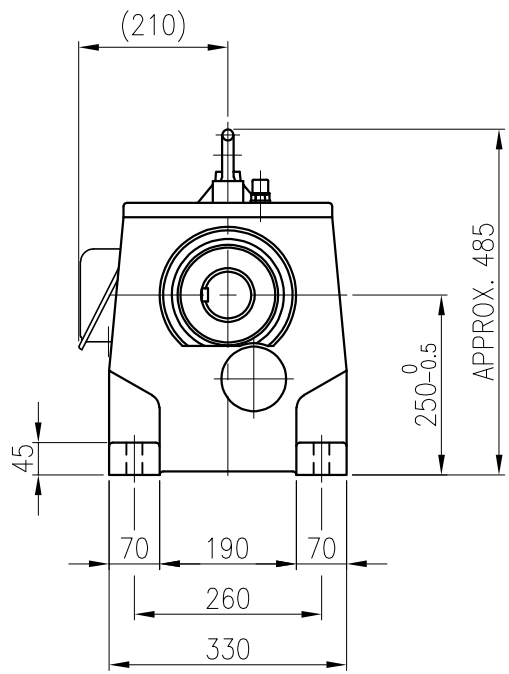
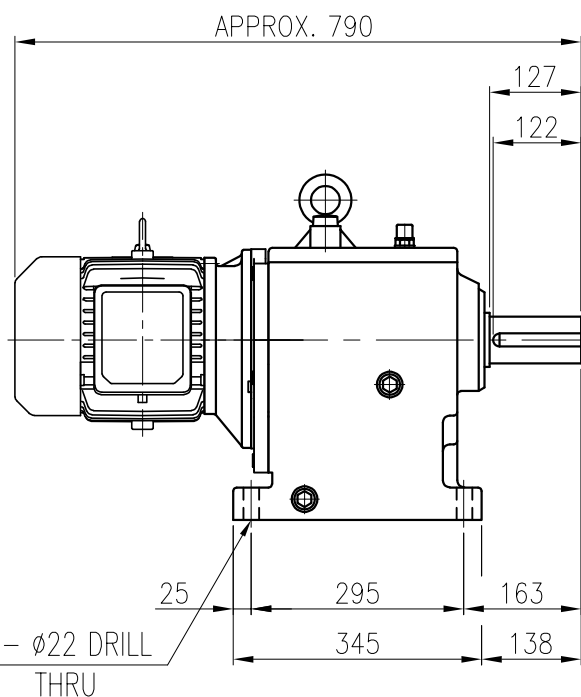


OUTPUT SHAFT
(18x11x113)



BEARING			
INPUT SHAFT	6206ZZ	6307ZZ	
2ND PINION	6404	NJ306E	
3RD PINION	NJ308E	NJ308E	
OUTPUT SHAFT	22209	22213	

OIL SEAL				OIL : ISO VG 220	
MOTOR SHAFT	D(M) 35 x 55 x 11	3RD PINION	NJ308E NJ308E	ABOUT 10 l	
OUTPUT SHAFT	D(M) 75 x 120 x 12	OUTPUT SHAFT	22209 22213	WEIGHT	188 kg

No.		DATE	DESCRIPTION of REVISION	DESIGNED				CHECKED	REVIEWED	APPROVED	DATE	2018-08-15
FORM		CE-14-0100-4A4	2013.11.20	최성민				문병선	박희성	홍원철	REVISION No.	01
TYPE		HHM25_112M(3.7kW)_80~120:1_Ntype		REF. No.				(GKDS470G01)				

HYOSUNG HEAVY INDUSTRIES

외형도
OUTLINE DIMENSION

DWG No.	EK2D007240H0001	UNIT	mm
		SCALE	1:1

DESIGNED	CHECKED	REVIEWED	APPROVED	DATE	2018-08-15
2018.10.01	2018.10.01	2018.10.01	2018.10.01	REVISION No.	01
				THIRD ANGLE PROJECTION	

이 도면상에 표시된 정보는 표상권(표)의 소유이며, 당사의 사전 서면동의 없이 무단사용을 금합니다.