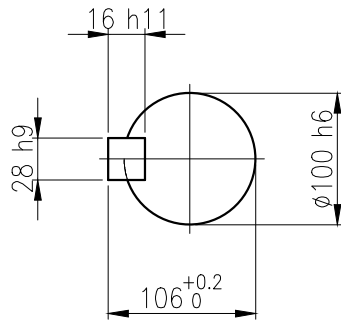
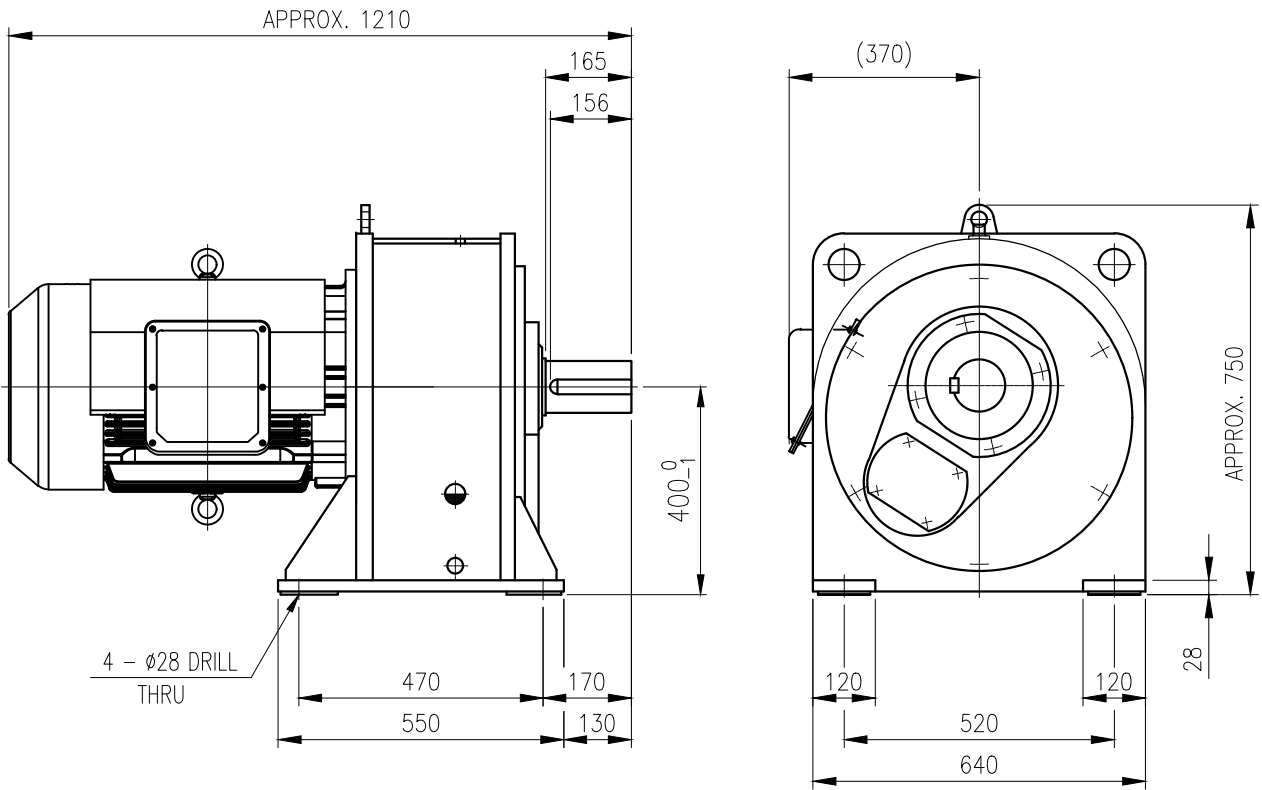


	1	2	3	4	5			
No.	NAME	MATERIAL	DWG/MATL No.	CODE	Q'TY	SIZE	WEIGHT	REMARK
					0			



KEY 28 x 16 x 140

OUTPUT SHAFT

		BEARING			
		INPUT SHAFT	6310ZZ	6313ZZ	
OIL SEAL		2ND PINION	30311	30213	OIL : ISO VG 220
MOTOR SHAFT	D(M) 55 x 78 x 12	3RD PINION	-	-	ABOUT 22 l
OUTPUT SHAFT	D(M) 110 x 140 x 14	OUTPUT SHAFT	30217	30222	WEIGHT 895 kg

		DWG NAME		외형도 OUTLINE DIMENSION			
		DWG No.		EK2DO07207W0001		UNIT	mm
						SCALE	1:1
No.	DATE	DESCRIPTION of REVISION		DESIGNED	CHECKED	REVIEWED	APPROVED
				2018.10.01	2018.10.01	2018.10.01	2018.10.01
				최성민	문병선	박희성	홍원철
						DATE	2018-08-15
						REVISION No.	01
						THIRD ANGLE PROJECTION	
		TYPE		REF. No.		(EN948)	
		FHM_200L(37kW)_25~30:1_Ntype				(A)	

이 도면상에 표시된 정보는 호성중공업(주)의 소유이며 당사의 사전 서면동의 없이 무단사용을 금합니다.