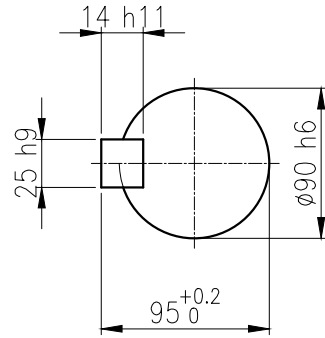
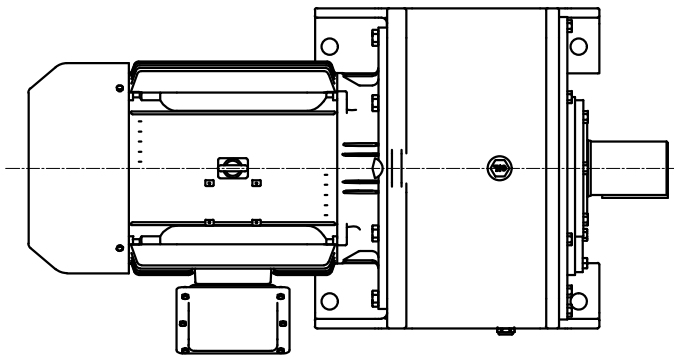
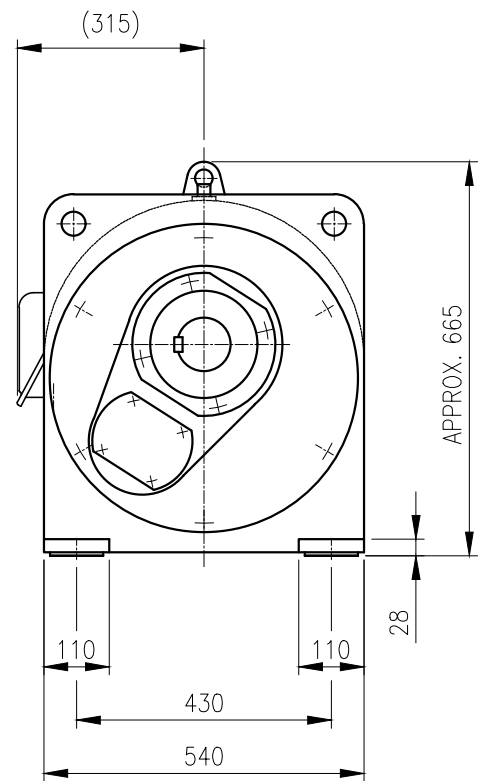
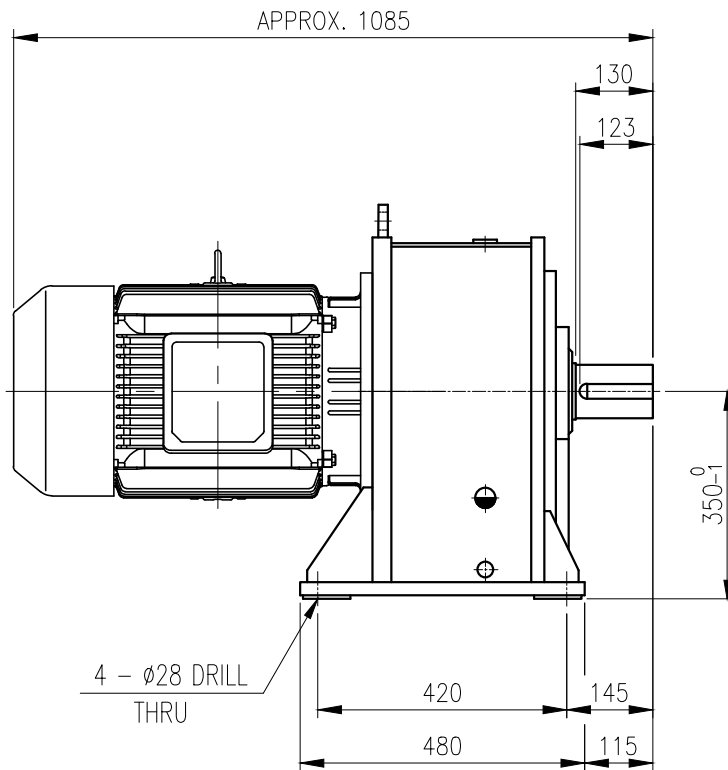


1	2	3	4	5				
No.	NAME	MATERIAL	DWG/MATL No.	CODE	Q'TY	SIZE	WEIGHT	REMARK
					0			



OUTPUT SHAFT

KEY 25 x 14 x 110



			BEARING		
			INPUT SHAFT	6310ZZ 6311ZZ	
OIL SEAL			2ND PINION	30310 30212	OIL : ISO VG 220
MOTOR SHAFT	D(M) 55 x 78 x 12		3RD PINION	- -	ABOUT 15 l
OUTPUT SHAFT	D(M) 95 x 120 x 13		OUTPUT SHAFT	30214 30219	WEIGHT 656 kg

		DWG NAME 외형도 OUTLINE DIMENSION							
		DWG No. <b>EK2DO07204H0001</b>		UNIT mm					
				SCALE 1:1					
No.	DATE	DESCRIPTION of REVISION		DESIGNED	CHECKED	REVIEWED	APPROVED	DATE	2018-08-15
A4(210x297mm)	FORM CE-14-0100-444 2013.11.20			2018.10.01 최성민	2018.10.01 문병선	2018.10.01 박희성	2018.10.01 홍원철	REVISION No.	01
TYPE FHM_180L(30kW)_5~20:1_Ntype				REF. No.	(EN945)		THIRD ANGLE PROJECTION		

이 도면상에 표시된 정보는 호성중공업(주)의 소유이며 당사의 사전 서면동의 없이 무단사용을 금합니다.