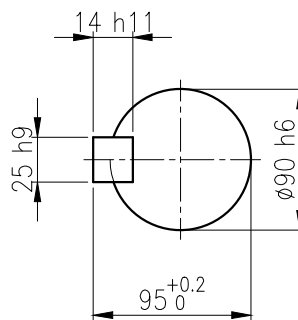
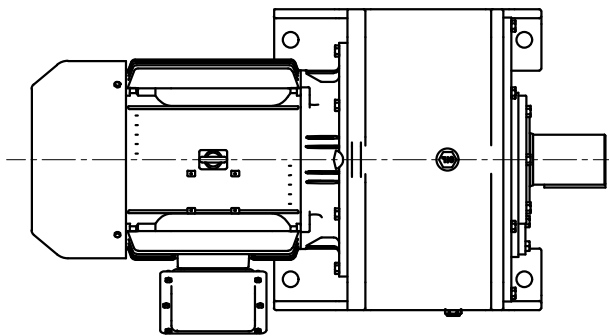
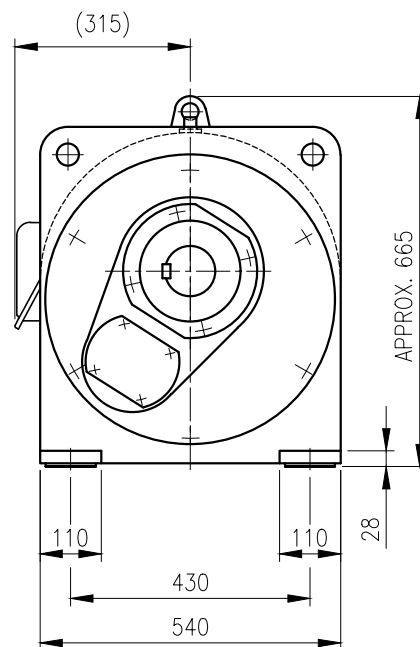
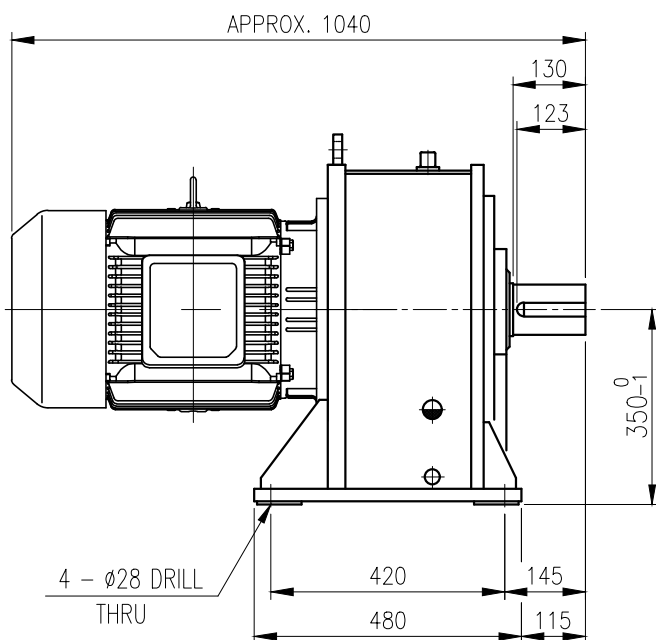


1	2	3	4	5				
No.	NAME	MATERIAL	DWG/MATL No.	CODE	Q'TY	SIZE	WEIGHT	REMARK
					0			



OUTPUT SHAFT

KEY 25 x 14 x 110



			BEARING		
			INPUT SHAFT	6310ZZ 6311ZZ	
	OIL SEAL		2ND PINION	30309 30211	OIL : ISO VG 220
	MOTOR SHAFT	D(M) 50 x 72 x 12	3RD PINION	- -	ABOUT 15 l
	OUTPUT SHAFT	D(M) 95 x 120 x 13	OUTPUT SHAFT	30214 30219	WEIGHT 537 kg

		DWG NAME		외형도 OUTLINE DIMENSION			
		DWG No.		EK2DO07203H0001		UNIT	mm
						SCALE	1:1
No.	DATE	DESCRIPTION of REVISION		DESIGNED	CHECKED	REVIEWED	APPROVED
A4(210X297mm)	FORM CE-14-0100-444 2013.11.20			2018.10.01 최성민	2018.10.01 문병선	2018.10.01 박희성	2018.10.01 홍원철
TYPE		FHM_180M(22kW)_25~30:1_Ntype		REF. No.	(EN944)		REVISION No. 01
						THIRD ANGLE PROJECTION	
						DATE 2018-08-15	

The information written in this drawing is HYOSUNG HEAVY INDUSTRIES's property, and may not be disclosed and/or reproduced without the prior official permission of HYOSUNG HEAVY INDUSTRIES Corp.

이 도면에 표시된 정보는 호성중공업(주)의 소유이며 당사의 사전 서면동의 없이 무단사용을 금합니다.