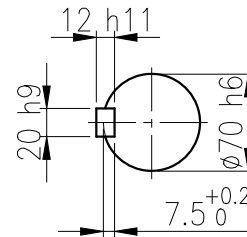
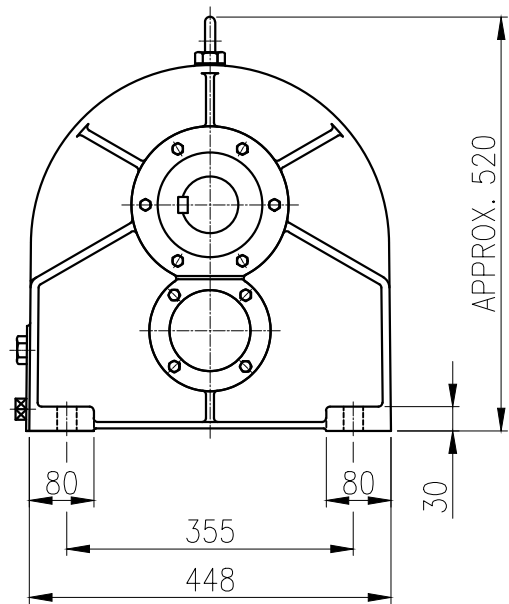
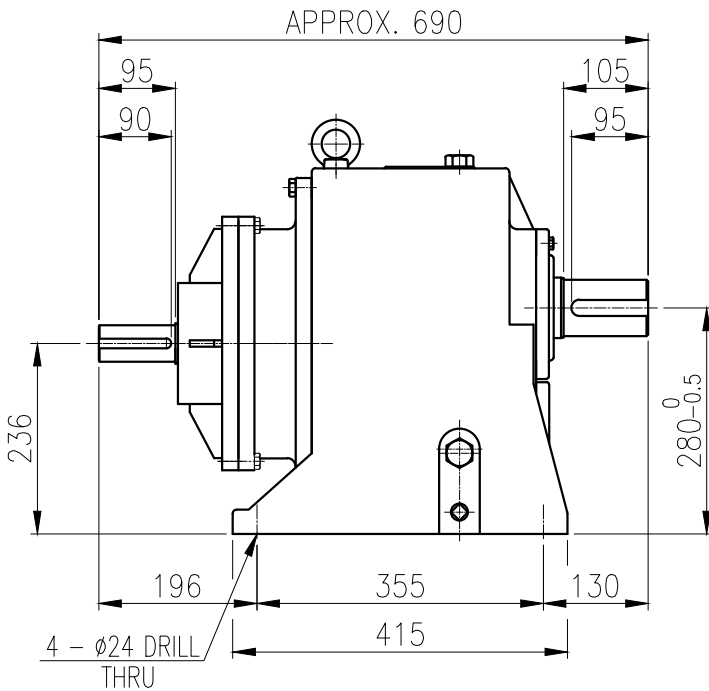


INPUT SHAFT
KEY 14 x 9 x 83



OUTPUT SHAFT
KEY 20 x 12 x 85



BEARING			
INPUT SHAFT	6310ZZ	6311ZZ	
2ND PINION	30209	30309	OIL : ISO VG 220
3RD PINION	-	-	ABOUT 10 l
OUTPUT SHAFT	30213	32215	WEIGHT 189 kg

OIL SEAL					
MOTOR SHAFT	D(M) 55x 78 x 12				
OUTPUT SHAFT	D(M) 75 x 100 x 13				

		DWG NAME 외형도 OUTLINE DIMENSION			
		DWG No. EK2D007198H0001		UNIT	mm
				SCALE	1:10
No.	DATE	DESCRIPTION of REVISION			
		DESIGNED	CHECKED	REVIEWED	APPROVED
		2018.10.01 최성민	2018.10.01 문병선	2018.10.01 박희성	2018.10.01 홍원철
		DATE 2018-08-15			
		REVISION No. 01			
		THIRD ANGLE PROJECTION			
TYPE FCB_11&15kW_4P_25~30:1_N type		REF. No. (EN239)			(A)