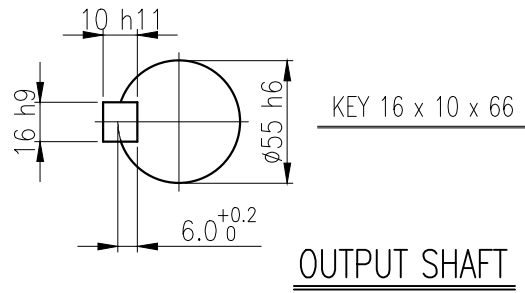
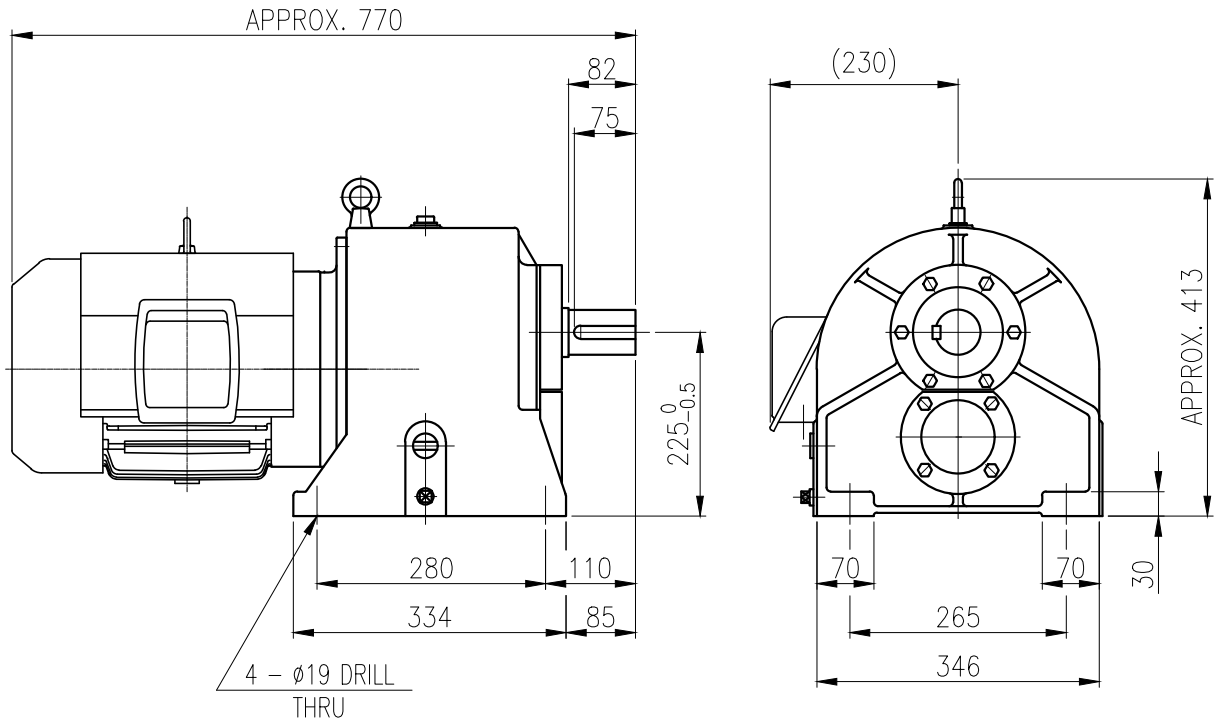


1	2		3		4		5	
No.	NAME	MATERIAL	DWG/MATL No.	CODE	Q'TY	SIZE	WEIGHT	REMARK
					0			



		BEARING			
		INPUT SHAFT	6207ZZ	6309ZZ	
OIL SEAL		2ND PINION	30208	30308	OIL : ISO VG 220
MOTOR SHAFT	D(M) 45 x 68 x 12	3RD PINION	-	-	ABOUT 7 l
OUTPUT SHAFT	D(M) 60 x 82 x 12	OUTPUT SHAFT	30211	30212	WEIGHT 162 kg

		DWG NAME		외형도 OUTLINE DIMENSION	
		DWG No.		E K2D007180W0001	
		UNIT		mm	
		SCALE		1:1	
No.	DATE	DESIGNED	CHECKED	REVIEWED	APPROVED
		2018.10.01	2018.10.01	2018.10.01	2018.10.01
		최성민	문병선	박희성	홍원철
DESCRIPTION of REVISION		DATE		2018-08-15	
REVISION No.		01		THIRD ANGLE PROJECTION	
TYPE		REF. No.		(EN100)	
FHB_132M(7.5kW)_25~30:1_N type				A	

The information written in this drawing is HYOSUNG HEAVY INDUSTRIES's property, and may not be disclosed and/or reproduced without the prior official permission of HYOSUNG HEAVY INDUSTRIES Corp.

이 도면상에 표시된 정보는 호성중공업(주)의 소유이며 당사의 사전 서면동의 없이 무단사용을 금합니다.