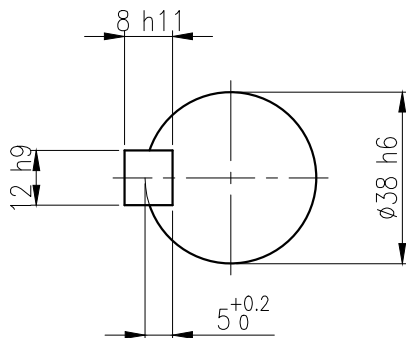
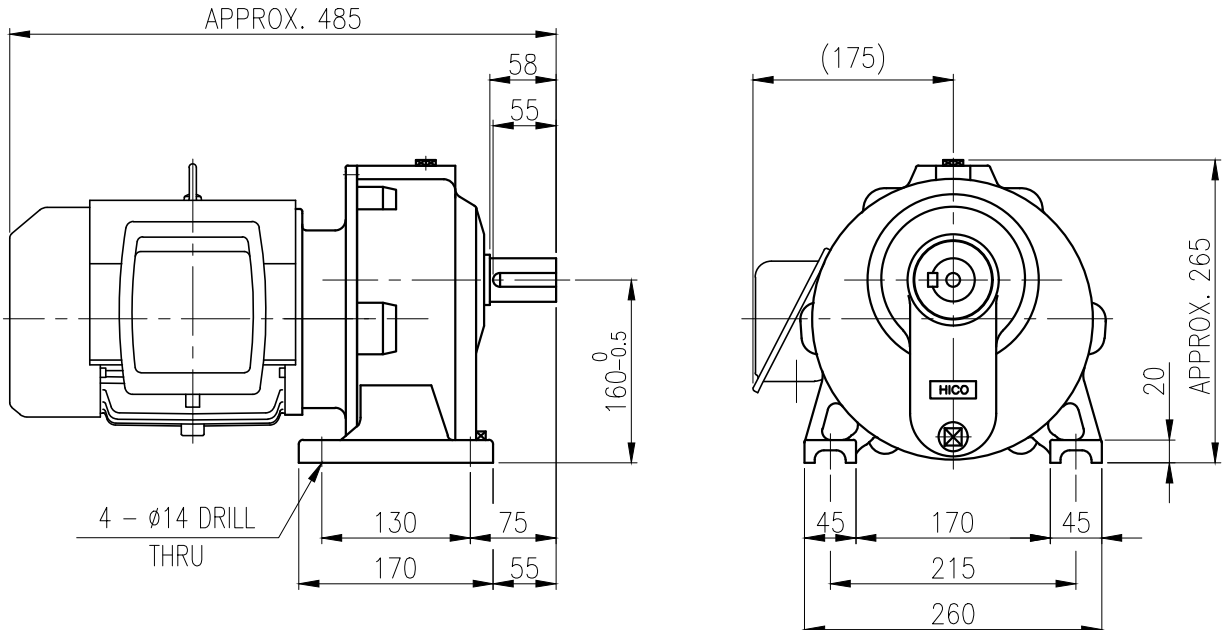


1	2		3		4		5	
No.	NAME	MATERIAL	DWG/MATL No.	CODE	Q'TY	SIZE	WEIGHT	REMARK
					0			



**OUTPUT SHAFT**  
KEY 12 x 8 x 49

		BEARING			
		INPUT SHAFT	#6204ZZ	#6305ZZ	
OIL SEAL		2ND PINION	#6304ZZ	#6305ZZ	GREASE : NLGI(EP)00
MOTOR SHAFT	D(M) 22 x 35 x 8	3RD PINION	-	-	ABOUT 0.3 kg
OUTPUT SHAFT	D(M) 45 x 68 x 12	OUTPUT SHAFT	#6209ZZ	#PM3020	WEIGHT 53 kg

		외형도 OUTLINE DIMENSION				DWG NAME	
		DWG No. <b>EK2DO07141W0001</b>				UNIT	mm
						SCALE	1:1
No.	DATE	DESCRIPTION of REVISION		DESIGNED	CHECKED	REVIEWED	APPROVED
				2018.10.01	2018.10.01	2018.10.01	2018.10.01
A4(210x297mm) FORM CE-14-0100-444 2013.11.20		<b>HYOSUNG HEAVY INDUSTRIES</b>		최성민	문병선	박희성	홍원철
TYPE		FHB_90Fr(1.5kW)_30:1_N type		REF. No.		(EN005)	
						DATE	2018-08-15
						REVISION No.	01
						THIRD ANGLE PROJECTION	
						(A)	

The information written in this drawing is HYOSUNG HEAVY INDUSTRIES's property, and may not be disclosed and/or reproduced without the prior official permission of HYOSUNG HEAVY INDUSTRIES Corp.

이 도면상에 표시된 정보는 호성중공업(주)의 소유이며 당사의 사전 서면동의 없이 무단사용을 금합니다.