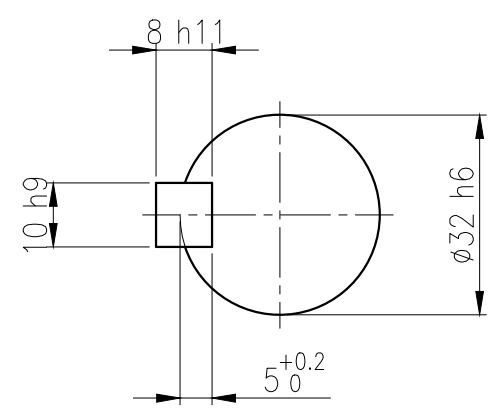
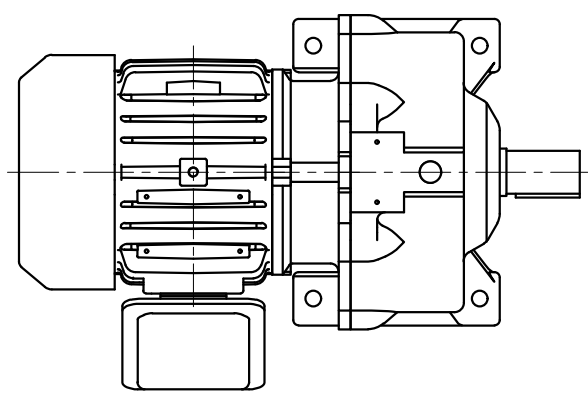
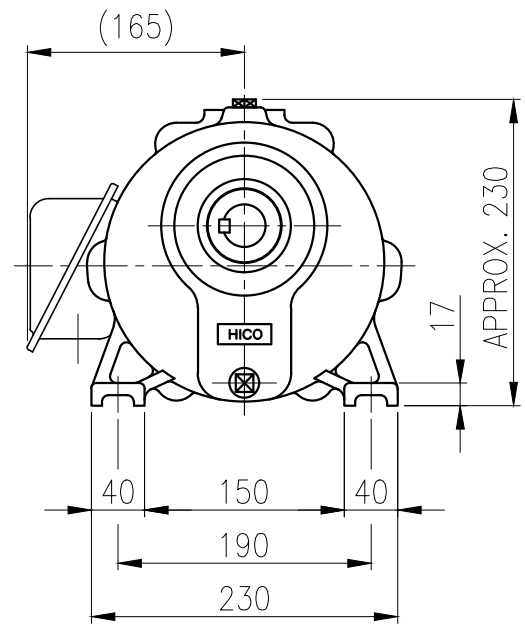
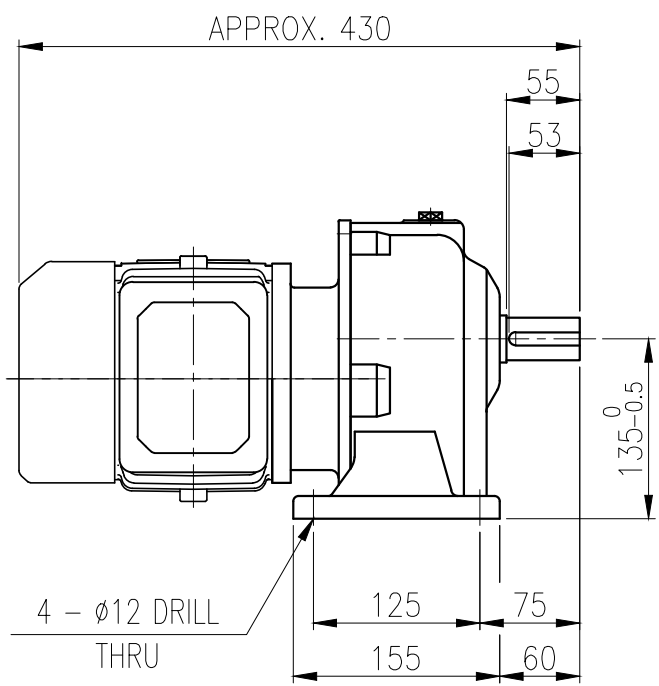


1	2	3	4	5				
No.	NAME	MATERIAL	DWG/MATL No.	CODE	Q'TY	SIZE	WEIGHT	REMARK
					0			



**OUTPUT SHAFT**

KEY 10 x 8 x 48



4 -  $\phi 12$  DRILL THRU

		BEARING			
OIL SEAL		INPUT SHAFT	#6203ZZ	#6205ZZ	
MOTOR SHAFT		2ND PINION	#6302ZZ	#6304ZZ	GREASE : NLGI(EP)00
D(M) 18 x 30 x 8		3RD PINION	-	-	ABOUT 0.3 kg
OUTPUT SHAFT		OUTPUT SHAFT	#6307ZZ	#PM2025	WEIGHT 36 kg
D(M) 35 x 55 x 11					

DWG NAME 외형도  
OUTLINE DIMENSION

DWG No. **EK2DO07137H0001** UNIT mm  
SCALE 1:1

No.	DATE	DESCRIPTION of REVISION	DESIGNED	CHECKED	REVIEWED	APPROVED	DATE	2018-08-15
A4(210X297mm)	FORM		2018.10.01	2018.10.01	2018.10.01	2018.10.01	REVISION No.	01
CE-14-0100-444	2013.11.20		최성민	문병선	박희성	홍원철	THIRD ANGLE PROJECTION	
TYPE		FHB_80Fr(0.75kW)_30:1_N type	REF. No.	(EN002)				(A)

이 도면상에 표시된 정보는 호성중공업(주)의 소유이며 당사의 사전 서면동의 없이 무단사용을 금합니다.