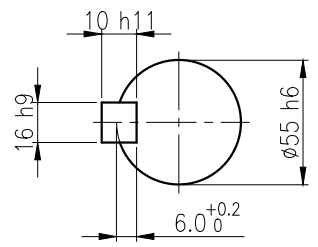
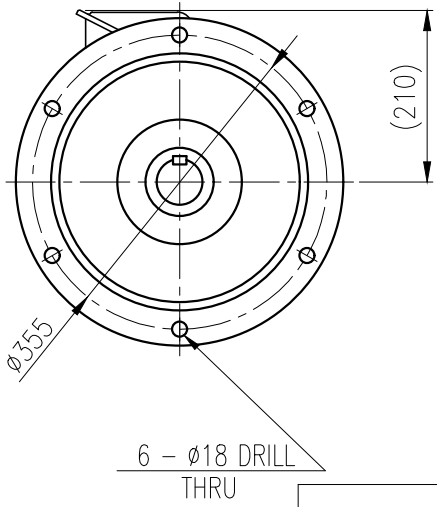
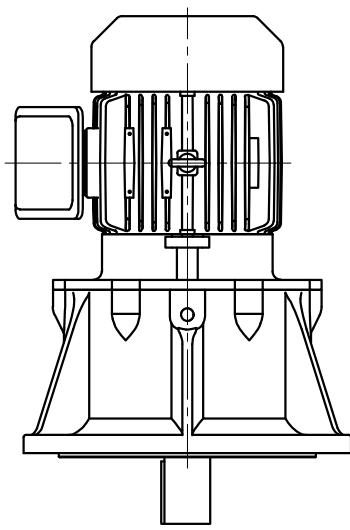
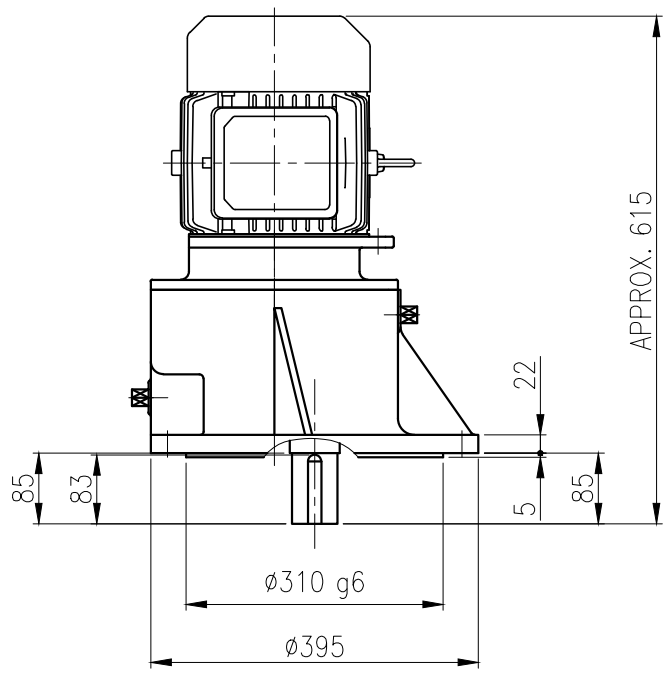


	1	2	3	4	5
No.	NAME	MATERIAL	DWG/MATL No.	CODE Q'TY	SIZE WEIGHT REMARK
				0	



OUTPUT SHAFT
KEY 16 x 10 x 75

		BEARING			
OIL SEAL		INPUT SHAFT	#6206ZZ	#6307ZZ	
MOTOR SHAFT D(M) 24x40x8		2ND PINION	#6305ZZ	#6305ZZ	GREASE : NLGI(EP)00
OUTPUT SHAFT D(M) 60x82x12		3RD PINION	#6306ZZ	#5305ZZ	ABOUT 1.8 kg
		OUTPUT SHAFT	#6312ZZ	#PM4020	WEIGHT 112 kg

		DWG NAME				외형도 OUTLINE DIMENSION	
		DWG No.		EK2DO07135H0001		UNIT	mm
						SCALE	1:1
No.	DATE	DESCRIPTION of REVISION		DESIGNED	CHECKED	REVIEWED	APPROVED
A4(210X297mm)	FORM CE-14-0100-444 2013.11.20			2018.10.01 최성민	2018.10.01 문병선	2018.10.01 박희성	2018.10.01 홍원철
TYPE				3.7_112Fr(3.7kW)_75~90:1_N type		DATE	2018-08-15
				REVISION No.		01	
				THIRD ANGLE PROJECTION			
		REF. No.		(EN272)		A	

The information written in this drawing is HYOSUNG HEAVY INDUSTRIES's property, and may not be disclosed and/or reproduced without the prior official permission of HYOSUNG HEAVY INDUSTRIES Corp.

이 도면상에 표시된 정보는 호성중공업(주)의 소유이며 당사의 사전 서면동의 없이 무단사용을 금합니다.